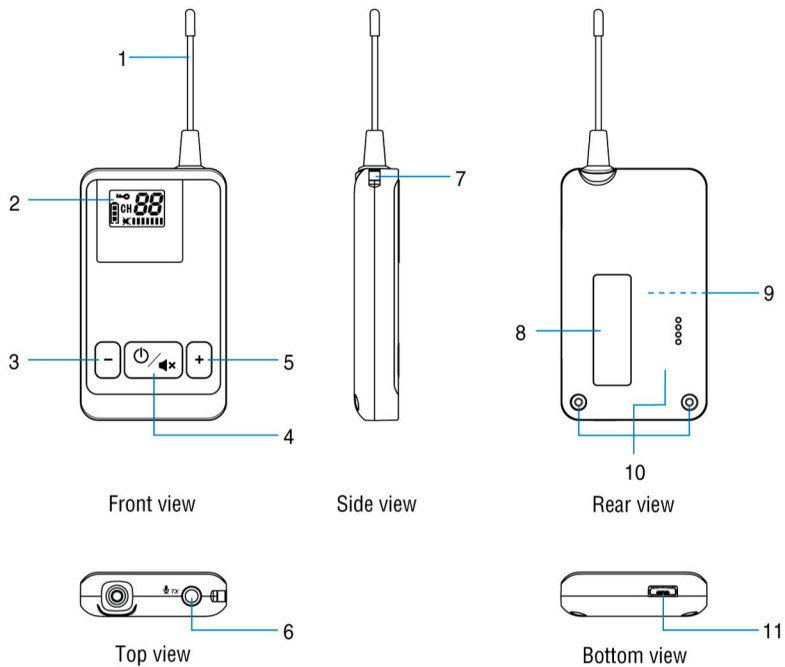
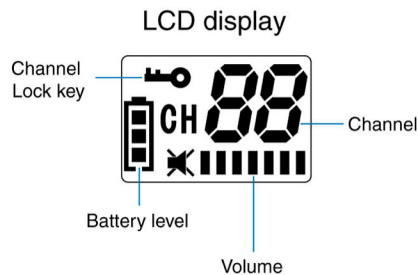


## Diagram and Instructions



1. Antenna
2. LCD display
3. Down button for channel and volume adjustment
4. On / Off / Mute / Set button — Transmitter  
On / Off / Set button — Receiver
5. Up button for channel and volume adjustment
6. Microphone / Aux input for Transmitter  
Earphone output for Receiver
7. Lanyard connection point
8. Label area
9. Battery compartment and built-in Li-polymer battery
10. Lid of battery compartment and screws
11. Micro-USB charging port



## LCD Display Illustration

	Transmitter	Receiver		Transmitter	Receiver
	Channel Lock			—	No signal received
	Channel change			100% battery remaining	
	Mute/Mic disconnect	Mute		70% battery remaining	
	LM-15 or Mic in with level 4 volume	earphone volume level 4		30% battery remaining	
	Aux in with level 5 volume	—		10% battery remaining	

## Operating Instructions

### Microphone and Earphone Connection

- Connect the microphone / headset to the 3.5mm socket on the transmitter and the earphones to the 3.5mm socket on the receiver. Make sure the connectors are properly inserted in place.

### Power On and Off

- Press and hold the power button / for 2 seconds to turn on the system. The LCD display will illuminate and retrieve the channel number used last time to indicate Power on successfully.
- Press and hold the power button / for 2 seconds. The LCD display will disappear to indicate Power off completely.

Note :

- Energy saving- Receiver will automatically power off if no signal is received after about 20min.

### How to select a channel

- The channel is preset to CH 01. If you wish to select a different channel, press and buttons simultaneously for 2 seconds. The sign starts flashing and icon is removed to indicate channel escape from lock mode. Press or button to select your desired channel. Press / button briefly to confirm the selected channel or wait for approximately 5 seconds to automatically store and lock the selected channel. CH will stop flashing and LCD displays icon. System now returns to lock mode.

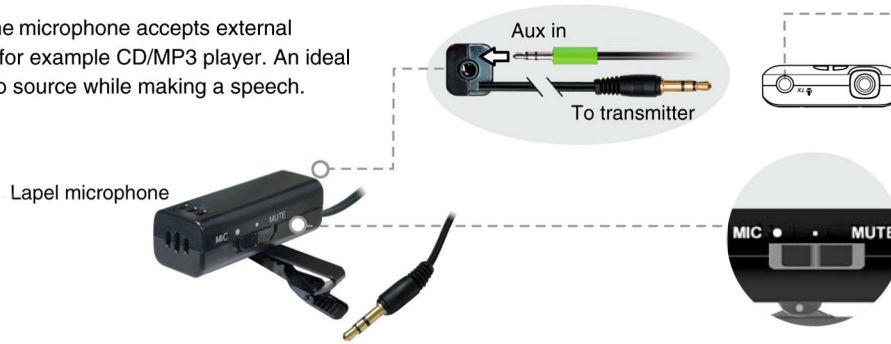
Note :

- Make sure that the transmitter and receiver(s) operate on the same channel. The receiver display will keep flashing when no transmission signal is being received.
- System will retrieve the channel number used previously.
- Channel SYNC – Receiver(s) which operates on same channel of the transmitter will be synced wirelessly when the channel in the transmitter has been changed as synchronization feature.

## How to adjust the Volume

### Transmitter: Using Lapel microphone

- The Aux input port on the microphone accepts external line-level audio source, for example CD/MP3 player. An ideal tool for you to play audio source while making a speech.



- Connect microphone to the 3.5mm socket on the transmitter
- Transmitter volume is preset at level 4 ◀ █ █ █ █
- Press **-** or **+** button to decrease or increase the volume level. There are 4 adjustable levels from ◀ █ █ █ █ to ◀ █ █ █ █ █ █ █ █
- Press mute button **Ⓜ** briefly to mute the transmitter, press the same button **Ⓜ** once again to recover.
- LM-15 features a microphone-mute switch; Switch to “mute” when you like to play the aux input source alone or to have private conversation.

### Transmitter: Using microphone other than LM microphone

- ⚠ The 3.5mm socket on the transmitter accepts mic and line level input source. The default input is set to microphone level

- Connect microphone to the 3.5mm socket on the transmitter
- Transmitter volume is preset at level 4 ◀ █ █ █ █
- Press **-** or **+** button to decrease or increase the volume level. There are 4 adjustable levels from ◀ █ █ █ █ to ◀ █ █ █ █ █ █ █ █
- Press mute button **Ⓜ** briefly to mute the transmitter, press the same button **Ⓜ** once again to recover.

### How to switch to line/mic level input manually

If you are connecting an aux input source to the transmitter, you must switch the default input level from microphone level to line level manually.

- To switch to line level, press and hold the **-** button for 5 seconds until the flashing speaker sign and solid level 1 segment appears. ◀ █ █ █ █
  - Press **-** or **+** button to decrease or increase the volume level. There are 8 adjustable levels from ✖ to ◀ █ █ █ █ █ █ █ █
  - Press mute button **Ⓜ** briefly to mute the transmitter, press the same button **Ⓜ** once again to recover.
- To switch back to microphone level, press and hold the **+** button for 5 seconds until the solid speaker sign and solid level 4 segment appears. ◀ █ █ █ █

### Receiver:

- Receiver volume is preset at level 4 ◀ █ █ █ █
- In normal state **🔊** be displayed, press **-** or **+** button to decrease or increase the volume level. There are 8 adjustable levels from ✖ to ◀ █ █ █ █ █ █ █ █
- The LCD display ✖ indicates no volume and in mute mode.

### Battery Autonomy and Charging

- When battery icon is displayed at fully autonomy **🔋**, the battery contains sufficient power.
- When the battery icon is displayed as empty and flashing **🔋**, this indicates low battery and only 10% battery remaining. Recharge the battery immediately via USB certified traveling charger (optional accessories) or appropriated Linkx charger station. It will take approx. 6 hours to reach full charge and provide approx. 16 hours of continuous operation for receiver and 11 hours of continuous operation for transmitter.
- While charging, the battery icon displays on LCD **🔋** → **🔋** → **🔋** back and forth.

Note :

- The transmitter or receiver will shut down automatically when charging is taking place. If you want to use the system while it's charging, simply press the power button again to turn the system back on.

### Q & A

- Q1** “**🔊**” Sign is displayed on Transmitter
- Ans** Check if the transmitter volume is muted or the microphone connection is not properly attached.
- Q2** The content on the LCD display of my receiver is flashing
- Ans** This indicates that no transmission signal is being received. Make sure your transmitter is powered on. Both transmitter and receiver are operated on the same channel and same frequency.
- ⚠ To ensure proper signal being received, set transmitter and receiver at least 30 cm apart. System being placed too close will cause the transmitted signal arrived at the receiver saturated instantly, system will then collapse and receiver will muted.